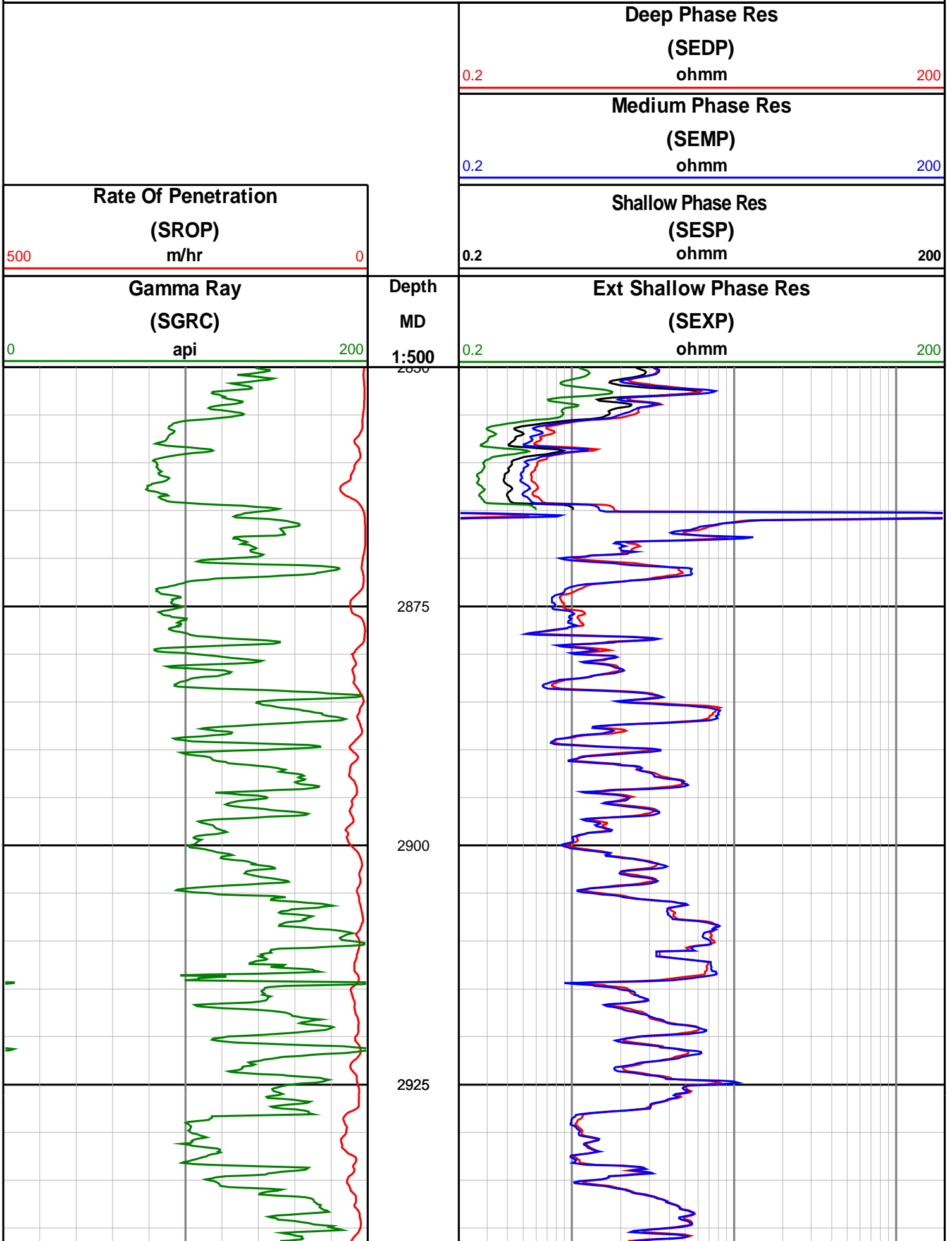
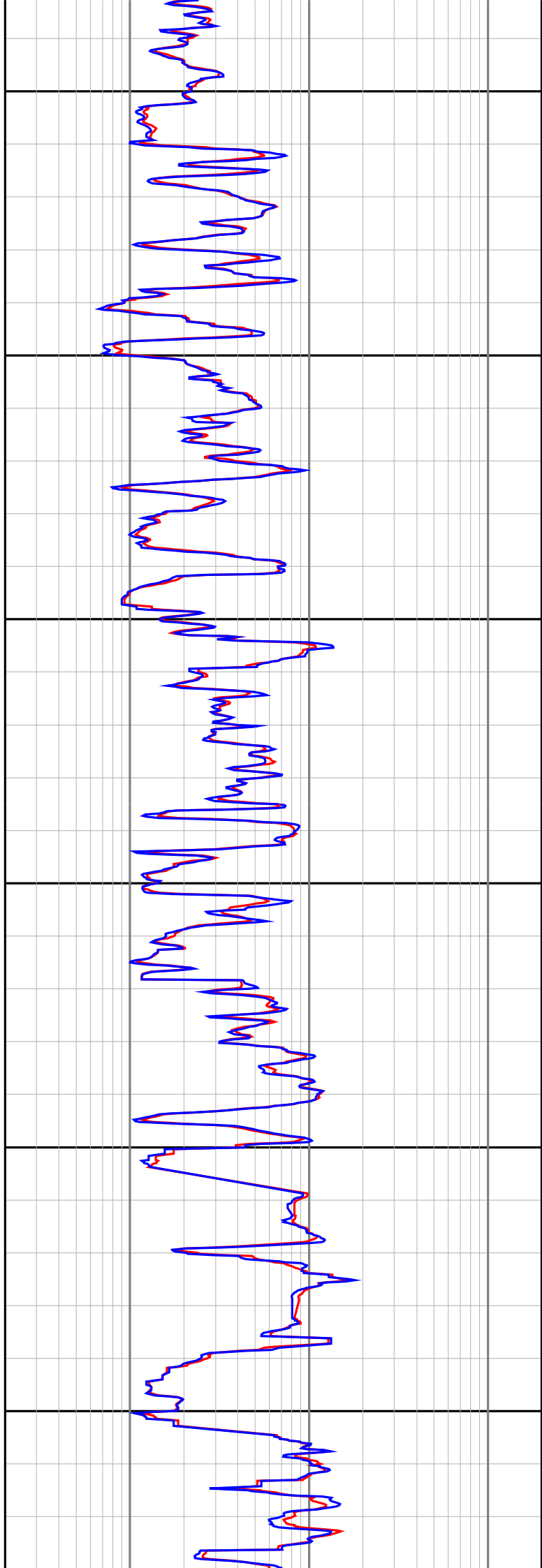
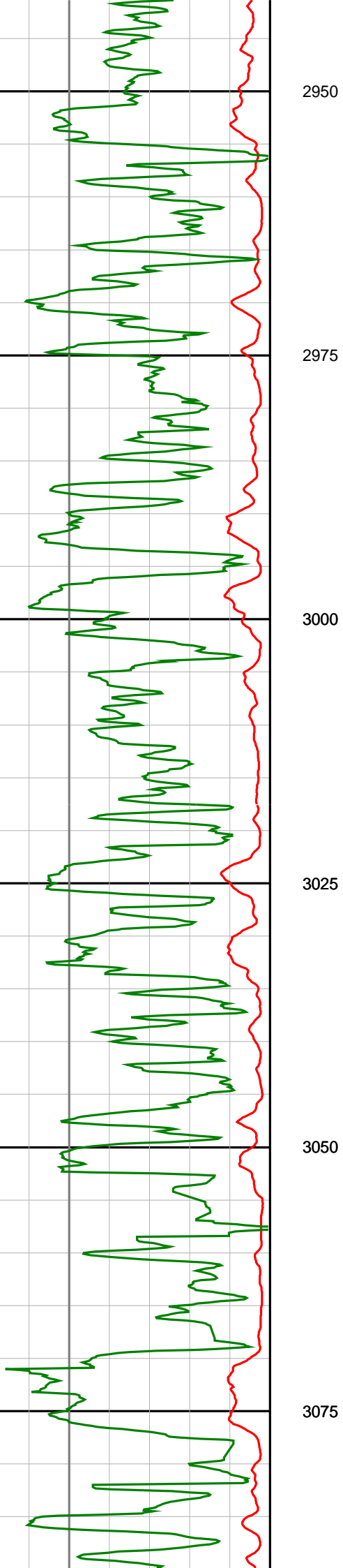


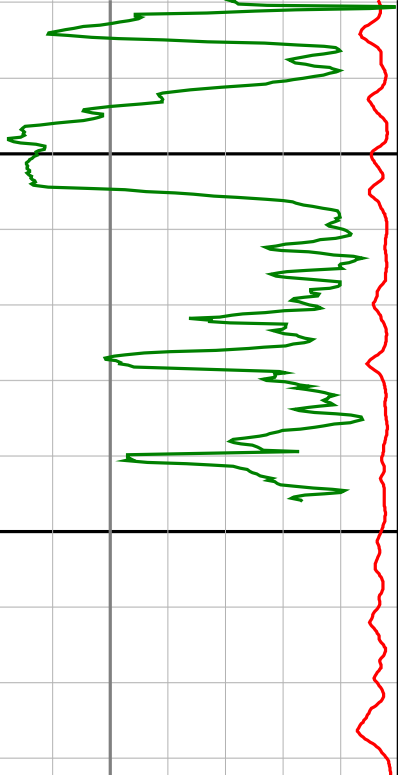
Anzon Australia Ltd

Basker-5

Realtime LWD Log (Permanent Datum - LAT)



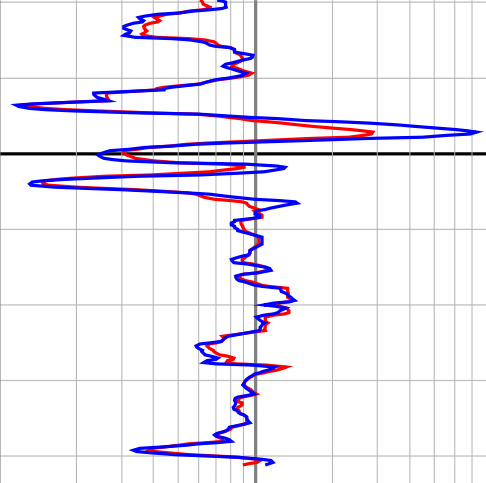




3100

3125

3150



**Gamma Ray
(SGRC)**
api

0 200

**Rate Of Penetration
(SROP)**
m/hr

500 0

**Depth
MD
1:500**

**Ext Shallow Phase Res
(SEXP)**
ohmm

0.2 200

**Shallow Phase Res
(SESP)**
ohmm

0.2 200

**Medium Phase Res
(SEMP)**
ohmm

0.2 200

**Deep Phase Res
(SEDP)**
ohmm

0.2 200